

## Sales Offices

<b>Head Office / Factories</b>	4-7-1, Asahigaoka, Hino-shi, Tokyo 191-0065, Japan	
	Private Demand System Sales And Marketing Department	TEL : 042-589-7541
	Machine Vision Sales And Marketing Department Domestic Sales Section	TEL : 042-589-8775
	Machine Vision Sales And Marketing Department Overseas Sales Section	TEL : 042-589-8771
<b>Tokyo Complex</b>	Toshiba-cho 1, Fuchu-shi, Tokyo 183-8511, Japan (On-site at Toshiba Fuchu Complex)	
	Public Demand System Sales And Marketing Department Private Demand System Sales And Marketing Department	TEL : 042-333-6901
<b>Tohoku Branch</b>	JRE Sendai Honcho 9F, 2-1-29, Honcho, Aoba-ku, Sendai 980-0014, Japan	
	Public Demand System Sales And Marketing Department	TEL : 022-217-3750
<b>Chubu Branch</b>	Meisei Nichome Building, 2-33-10, Meisei, Nishi-ku, Nagoya 451-0064, Japan	
	Private Demand System Sales And Marketing Department Machine Vision Sales And Marketing Department	TEL : 052-524-0223
	Public Demand System Sales And Marketing Department	TEL : 052-528-3620
<b>Osaka Branch</b>	Nomura Fudosan Midousuzi Hommachi Building 4F, 4-2-12, Hommachi, Chuo-ku, Osaka 541-0053, Japan	
	Public Demand System Sales And Marketing Department Private Demand System Sales And Marketing Department	TEL : 06-6252-3512
<b>Kobe Branch</b>	Sannomiya Chuo Building 10F, 4-2-20, Goko-dori, Chuo-ku, Kobe, Hyogo 651-0087, Japan	
	Private Demand System Sales And Marketing Department Machine Vision Sales And Marketing Department	TEL : 078-241-7717
<b>Kyusyu Branch</b>	Toshiba Fukuoka Building 12F, 2-4-1, Nagahama, Chuo-ku, Fukuoka 810-0072, Japan	
	Public Demand System Sales And Marketing Department	TEL : 092-762-1230

## Corporate Profile

### Toshiba Teli Corporation

4-7-1, Asahigaoka, Hino-shi, Tokyo 191-0065, Japan  
<https://www.toshiba-teli.co.jp/>

Toshiba Teli Corporation



# Grasping the times, looking ahead to the future, and venturing into social development

We utilize the expertise we have accumulated through our past businesses and pass down our unique technology in imaging, telecommunications, broadcasting, and disaster prevention systems to provide "highly specialized engineering solutions\*" that satisfy our customers. As an engineering professional group incorporating technology that continues to advance daily, we can solve customer problems and digitally transform all business processes from product planning, development design, manufacturing, and construction to after-sales service.

The digitalization that started from the popularization of ICT and changed to the formulation of the digital society and technological innovation through digital transformation is progressing in all realms of society, disaster prevention, and industrial infrastructure. The social role of our "digital technology in the imaging and telecommunication fields" has evolved and its importance is increasing more and more.

Toshiba Teli will contribute to improving customer value in a wide range of fields beyond imaging and telecommunications domestically and internationally with confidence and pride in our own products and technology. We will pursue customer satisfaction that is worthy of being called "technological Toshiba Teli" throughout the product life cycle.

To support the customers' business growth through "imaging/telecommunications/broadcasting/disaster prevention systems" and work hard to solve environmental problems in order to contribute to a prosperous society filled with security and safety, we will always read the trends of the times and strive to create a company that will grow and develop into the future.

\* Engineering solution: Activities that provide solutions for all manufacturing processes from planning to component development, system construction, construction, and post-implementation follow-up for customer issues.

## Corporate philosophy

We combine knowledge and new technologies to provide "highly specialized engineering solutions" that satisfy our clients.

We will provide each employee with opportunities for self-realization and create a vigorous and healthy organizational climate by constantly practicing change.

Under our basic policy of placing the highest priority on safety, security, and compliance, we not only strive to preserve the global environment, but also to fulfill our social responsibility as a company and continue to be a respected enterprise.

We contribute to society and our stakeholders by working with our customers to evolve the various systems that support society into more reliable ones.

## Corporate vision

Toshiba Teli aims to establish itself as a trusted brand and become a leading global company by continuously providing highly specialized engineering solutions in imaging, telecommunications, broadcasting, and disaster prevention systems and by creating added value that exceeds customer expectations.

## Disaster Prevention / Communication System Business

We provide public offices and municipalities with each system that relates to social infrastructure, such as multi-satellite network, disaster-prevention communication network, water management system for dams and rivers, audio monitoring systems. We widely offer solutions for protections, emergency responses, and disaster recovery efforts, by configuring the system for collecting and managing the information of natural disasters, such as typhoons, heavy rains, and tsunamis.

## Disaster Prevention / Communication System

We suggest, sell, and construct systems that operate social infrastructures, such as roads, rivers, and dams, while we design and develop hardware and software.

## Construction Management

We perform various construction related businesses, such as field representatives and chief/technical supervisors, from a construction design through construction management at site.

## Field Survey / Testing / Adjusting

We compile work procedures while considering the quality, safety, and environment, based on the field survey before a construction. We test and adjust devices and systems of both hardware and software after installing monitoring cameras and server, etc.

## Broadcasting System Business

We handle everything from proposal, design, manufacturing, installation, and adjustment of broadcasting systems that form the basis of broadcasting business for broadcasting stations and program distribution companies to contribute to the maintenance of customer equipment.

## Equipment for Studio / Transmitter

We are implementing operations from design manufacturing engineering to construction management and test adjustment of various systems for various studio equipment and transmission equipment for terrestrial, BS, CS broadcasting and FM broadcasting.

## Wireless Communication Network Business

We are providing government offices and mobile carriers with manufacturing, post-shipment installation, testing, and adjustment of wireless network equipment making full use of wireless transmission, fiber optic transmission, digital signal processing, and mechanical design technologies. In addition, we provide total solutions from the proposal of a local 5G system that supports communication infrastructure with increasing capacity to license application support / agency, operation and maintenance.

## Wireless Communication Network Equipment

We manufacture wireless network equipment and test and adjust equipment delivered to customers, which include, assembling and wiring of chassis, adjusting wireless high frequency circuits and single unit of digital signal processing section, testing its performance as equipment, and testing systems.

## Machine Vision Business

We offer a new value for industrial use, foods / medical treatment by utilizing video. We open up the path to the future by pursuing high speed, high definition, and high reliability.

## Industrial Cameras

Industrial cameras are widely used as the eyes of various manufacturing and testing equipment as well as for quality control management.



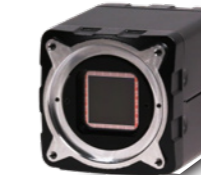
GigE Cameras  
(BG series)



USB3 Cameras  
(BU series)



Camera Link Cameras  
(BC series)



CoaXPress 2.0 Cameras  
(EX series)

## Pipe Inspection Cameras

Support maintenance and inspection of lifelines such as water, sewerage, gas and electricity. Improve efficiency of inspection of buried pipes damaged by age or disaster.



Push-in Hard Cable Camera System



Pipe Inspection Camera System  
(Head + Self-guided Vehicle)

## Private Demand System Business

We provide private companies with each solution that is integrated with leading network technologies and electronics technologies, such as monitoring cameras systems, security systems, and control and measuring systems.

## Security & Surveillance Cameras / Harsh Environment Cameras

We are supporting various applications and usage environments from monitoring of local area and remote monitoring through the IP network. We are also providing cameras suitable for use in special environments such as high temperature and explosion-proof environment.



All-in-one Outdoor  
Cameras



Integrated PTZ Cameras



Blast-resistant Camera  
Equipment



Industrial Monitors

## Radio Control Equipment

Remote operation of overhead traveling cranes as well as construction and industrial machinery.



## CSR Management / Environmental Management / Total Quality Assurance

We adhere to compliance, reduction of environmental impact, and quality assurance through the life cycle of products in a consistent manner to continue efforts toward the establishment of credibility.

### CSR Management

We give first priority to compliance with laws and regulations, societal norms, corporate ethics etc. in all business activities.

### Total Quality Assurance

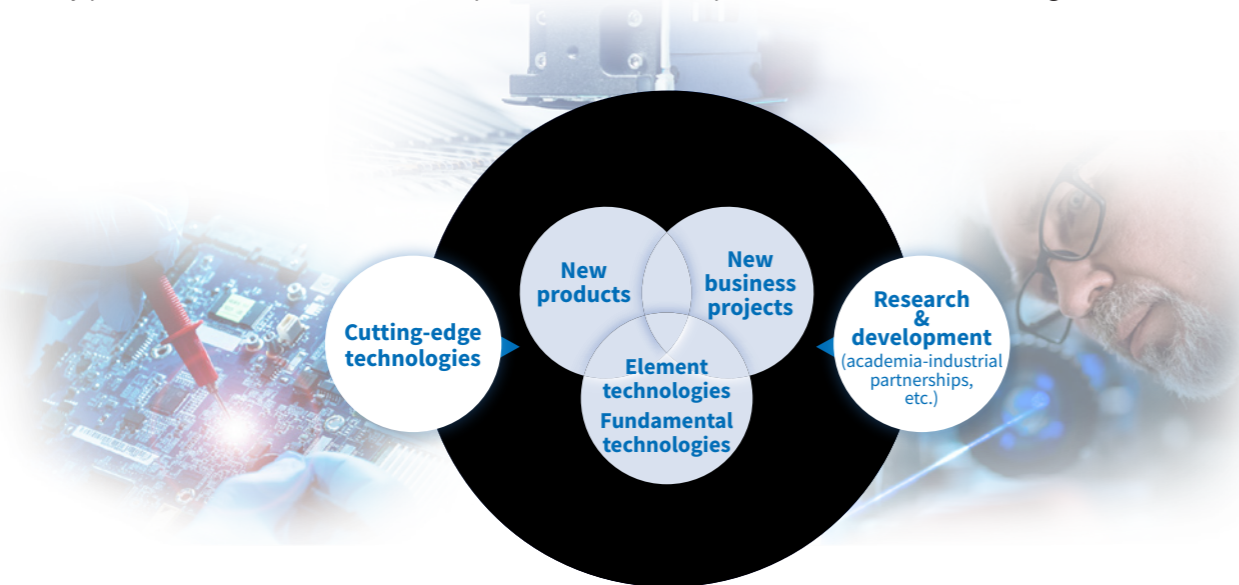
We continuously exert a strong commitment to quality first and contribute to the improvement of customer satisfaction and development of society through the continuous improvement activities.

### Environmental Management

We believe that passing on the irreplaceable global environment to the next generation in healthy shape is our basic responsibility as members of society.

## Research and Development

We collaborate with industries and universities and cooperate with various laboratories of the TOSHIBA group on technologies we have long fostered throughout the years. We actively promote the investment in development to create new possibilities for manufacturing.



## Possession of Qualifications

The following qualifications are possessed as we encourage personnel to obtain national qualifications relating to the businesses in order to provide customers with highly specialized engineering as well as the products and services in high quality. This qualification is an official qualification in Japan.

- Professional Engineer (electrical & electronics engineering, information engineering, and engineering management)
- Information Technology Engineer (ST, PM, NW, ES, SC, AP, FE, IP)
- Architect (1st class, 2nd class)
- Technical Radio Operator for On-The-Ground Services (1st class, 2nd class)
- Chief Telecommunications Engineer (transmission and switching, line)
- The Third Class Electric Works Specialist
- Installation Technician (AI and DD, AI, DD(type I, II))
- Operation and Management Engineer (electrical works, telecommunication works, and civil engineering (1st class, 2nd class))
- Electrician (1st class, 2nd class)
- Vendor-type Certification (Cisco Systems, Oracle, Microsoft, etc.)
- On-The-Ground Special Radio Operator (I -Category, II -Category, and III -Category)
- Technical Supervisor (electricity, telecommunications, civil engineering, and construction)
- Industrial Hygiene Health Manager, Health Manager (1st class)
- Microsoldering engineering certification (high rank operator, inspector)
- Linux Professional Certification (LPIC-1, 2, and 3)
- Skill Proficiency Test: Electronic equipment assembling (special grade, 1st grade, and 2nd grade)

\* As of November 2023

## Corporate Overview

<b>Company Name</b>	Toshiba Teli Corporation
<b>Date of Establishment</b>	October 1, 2023
<b>Capital Fund</b>	260,000,000 yen
<b>Representative</b>	Hirohito Maeda President
<b>Shareholders</b>	Toshiba Infrastructure Systems & Solutions Corporation : 100%
<b>Headquarters Address</b>	4-7-1, Asahigaoka, Hino-shi, Tokyo 191-0065, Japan TEL : 042-589-7777 FAX : 042-589-7389



## Business License / Registration / Certification

- Permission from Minister of Construction Industry:  
Special Construction Business License (telecommunications, electricity)
- Registered Inspector
- Registered Electric Constructor
- ISO9001 certification
- ISO14001 certification
- ISO45001 certification

## Corporate History

### Toshiba Communications Infrastructure Systems Corporation

- 1963** Tokyo Denki Tokki Co., Ltd. Osaka office started sales of wireless communication equipment, electronic application measuring instruments, electronic components, etc.
- 1973** Became independent company as Tokki Denshi Co., Ltd. in order to expand the business as a general trading company for industrial electronics.
- 1977** TOSHIBA CORPORATION made a financial investment.
- 1986** The name was changed to Toshiba Tokki Denshi Co., Ltd.
- 2012** Toshiba Tokki Denshi Co., Ltd and Toshiba Broadcasting and Network Engineering Corporation merged, and the name was changed to Toshiba Communications Infrastructure Systems Corporation.

### Former Toshiba Teli Corporation

- 1940** Tokyo Shibaura Electric Co., Ltd. Kobe factory opened.
- 1950** Separated from Tokyo Shibaura Electric Co., Ltd. Kobe factory as TOSHIBA's second company, Tokyo Electric Wireless Co., Ltd. due to the corporate restructuring plan based on the Act for Elimination of Excessive Concentration of Economic Power.
- 1959** The name was changed to Toshiba Electronic Industry Co., Ltd.
- 1967** Merged with Tokyo Electronic Device Co., Ltd. and the name was changed to Tokyo Electronic Industry Co., Ltd.
- 2004** After receiving the surveillance camera system businesses of Toshiba Communication Systems Corporation, the name was changed to Toshiba Teli Corporation.



**In October 2023, The two companies merged to form the new Toshiba Teli Corporation.**