

CoaXPress 2.0 | EX Series

NEW

EX670AMG-X

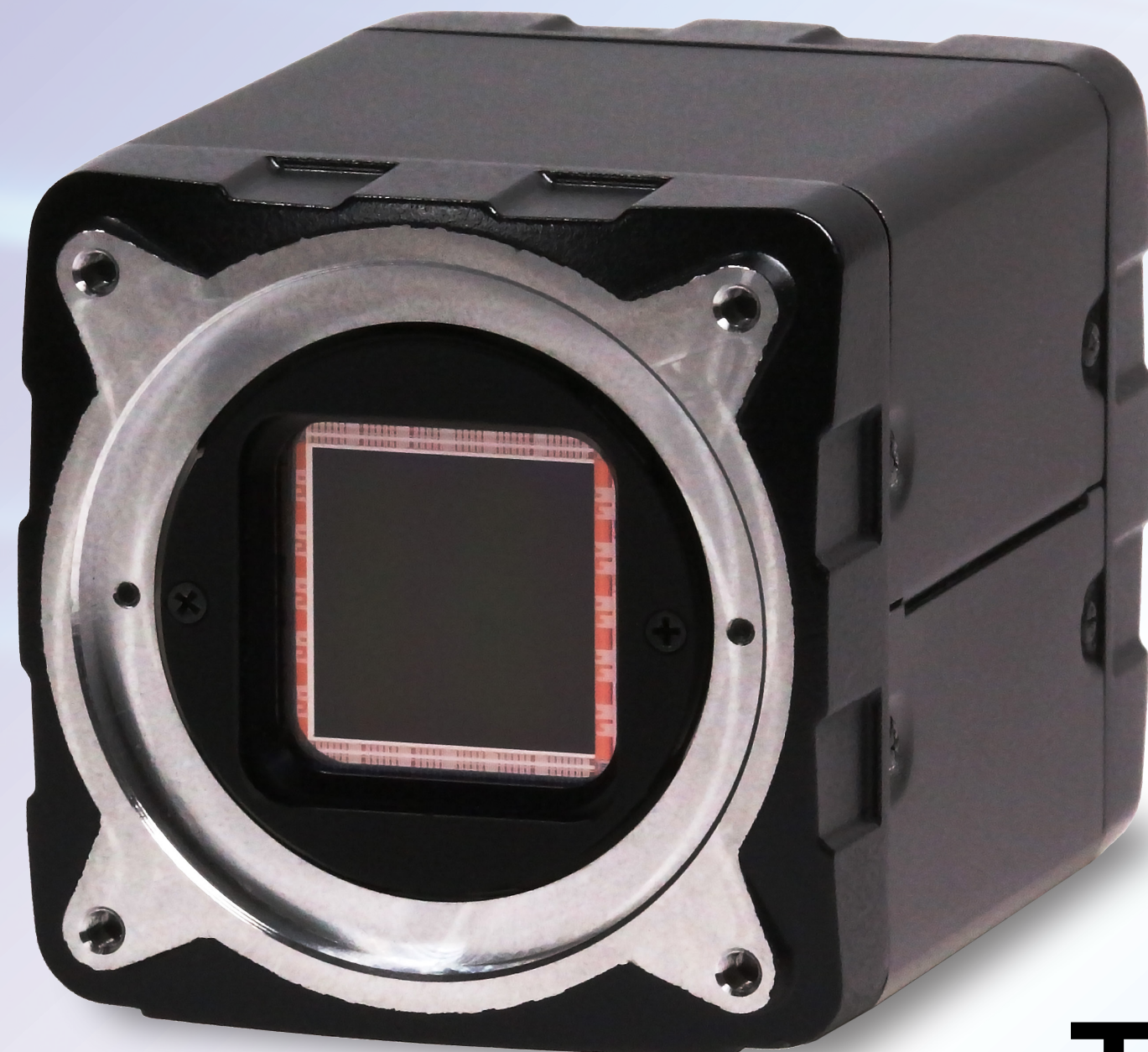
CXP-12 Quad | EX series | 60×60×80mm | 280g

67
MP

64.5
fps

B/W

Bandwidth
50G



CoaXPress™

Features

- e2v EV2S67MB CMOS sensor
- TELI original IP core
- Global electronic shutter
- CoaXPress 2.0 interface
- 50Gbps transfer bandwidth provided by CXP-12 Quad
- GenICam conformity
- IIDC2 Digital Camera Control Specification
- Square grid array
- Camera control / image acquisition by TeliCamSDK



Toshiba Teli Corporation

CoaXPress 2.0 | EX Series

Coming
soon

EX670AMCG-X

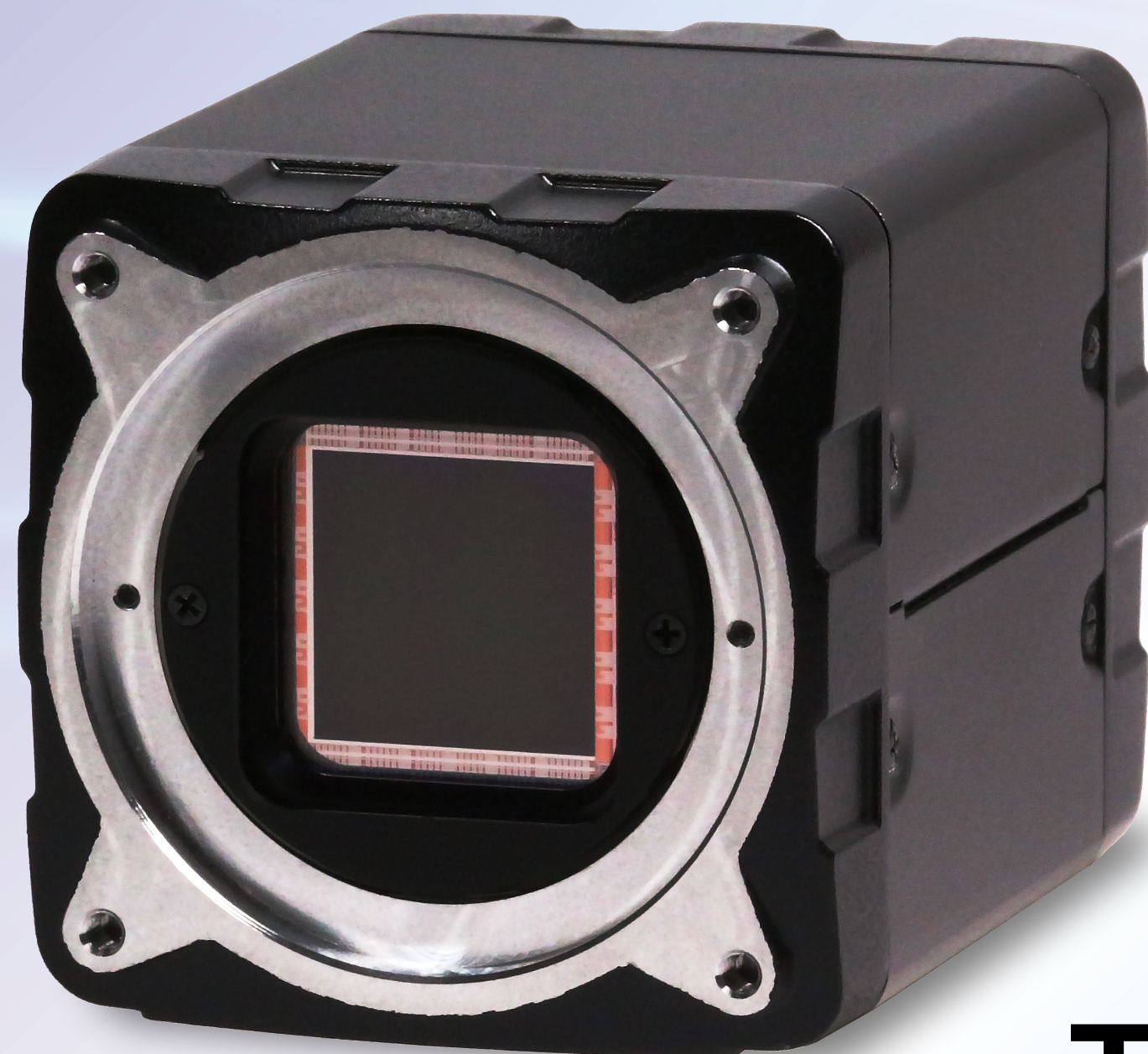
CXP-12 Quad | EX series | 60×60×80mm | 280g

67
MP

64.5
fps

Color

Bandwidth
50G



CoaXPress™



Features

- e2v EV2S67MC CMOS sensor
- TELI original IP core
- Global electronic shutter
- CoaXPress 2.0 interface
- 50Gbps transfer bandwidth provided by CXP-12 Quad
- GenICam conformity
- IIDC2 Digital Camera Control Specification
- Square grid array
- Camera control / image acquisition by TeliCamSDK



Toshiba Teli Corporation

CoaXPress 2.0 | EX Series

NEW

EX370BMG-X

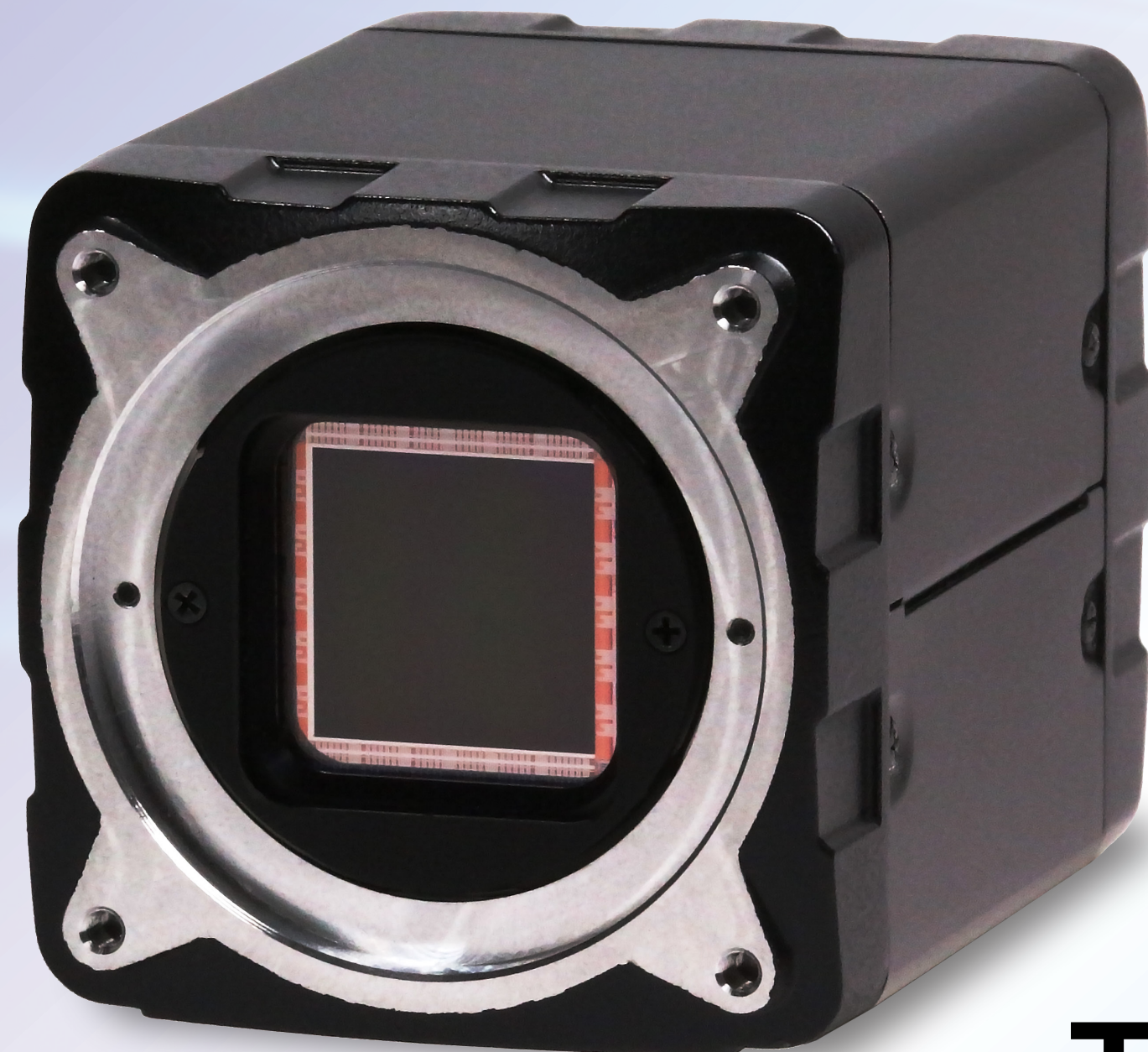
CXP-12 Quad | EX series | 60×60×80mm | 280g

37.7
MP

120
fps

B/W

Bandwidth
50G



CoaXPress™

Features

- e2v EV2S36MB CMOS sensor
- TELI original IP core
- Global electronic shutter
- CoaXPress 2.0 interface
- 50Gbps transfer bandwidth provided by CXP-12 Quad
- GenICam conformity
- IIDC2 Digital Camera Control Specification
- Square grid array
- Camera control / image acquisition by TeliCamSDK



Toshiba Teli Corporation