

Dual USB3 | DDU Series

NEW

# DDU1607MG

40(W)×40(H)×35(D) mm | 90 g

16  
MP

47  
fps

B/W



Bandwidth  
10G



USB<sup>TM</sup>  
VISION



## Features

- onsemi XGS16000 CMOS sensor
- TELI original IP core
- Global electronic shutter
- Dual USB3.1 Gen1 interface
- 10Gbps data transfer
- GenICam conformity
- IIDC2 Digital Camera Control Specification
- e-CON Connector adoption
- Compact and lightweight
- Camera control / image acquisition by TeliCamSDK



# Toshiba Teli Corporation



Dual USB3 | DDU Series

NEW

# DDU1607MCG DDU1607MCF

40(W)×40(H)×35(D) mm | 90 g

16  
MP

47  
fps

Color



Bandwidth  
10G



USB<sup>TM</sup>  
VISION



## Features

- onsemi XGS16000 CMOS sensor
- TELI original IP core
- Global electronic shutter
- Dual USB3.1 Gen1 interface
- 10Gbps data transfer
- GenICam conformity
- IIDC2 Digital Camera Control Specification
- e-CON Connector adoption
- Compact and lightweight
- Camera control / image acquisition by TeliCamSDK



# Toshiba Teli Corporation



Dual USB3 | DDU Series

# DDU1207MG

40(W)×40(H)×35(D) mm | 90 g

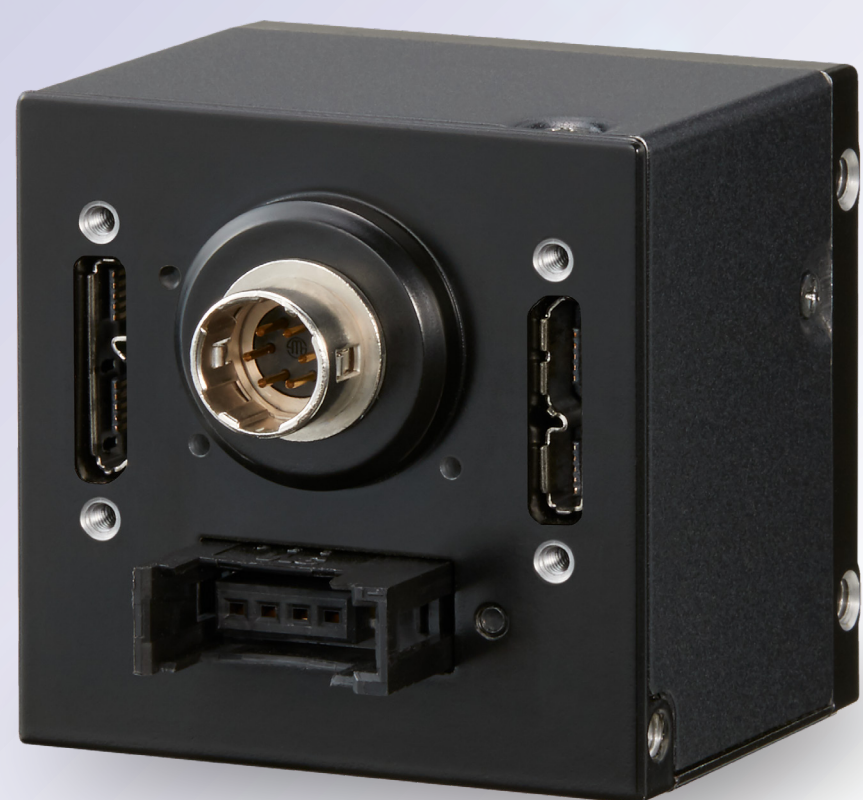
12.3  
MP

62  
fps

B/W



Bandwidth  
10G



USB<sup>TM</sup>  
VISION



## Features

- Sony IMX253 CMOS sensor
- TELI original IP core
- Global electronic shutter
- Dual USB3.1 Gen1 interface
- 10Gbps data transfer
- GenICam conformity
- IIDC2 Digital Camera Control Specification
- e-CON Connector adoption
- Compact and lightweight
- Camera control / image acquisition by TeliCamSDK



# Toshiba Teli Corporation



Dual USB3 | DDU Series

# DDU1207MCG DDU1207MCF

40(W)×40(H)×35(D) mm | 90 g

12.3  
MP

62  
fps

Color



Bandwidth  
10G



USB<sup>TM</sup>  
VISION



## Features

- Sony IMX253 CMOS sensor
- TELI original IP core
- Global electronic shutter
- Dual USB3.1 Gen1 interface
- 10Gbps data transfer
- GenICam conformity
- IIDC2 Digital Camera Control Specification
- e-CON Connector adoption
- Compact and lightweight
- Camera control / image acquisition by TeliCamSDK



# Toshiba Teli Corporation