

Imaging IoT for Smart Factory

[Concept Exhibition]

Simple and easy IoT with image.

Visualization of work by image analysis and easy analysis of work by recorded image support productivity improvement

Image utilization

- 1: No need for improvement in working site
- 2: Easy installation and adjustment free for facility
- 3: Data from multiple points can be collected with single camera
- 4: Image can be analyzed

Visualization of operation status and process progress

- 1: Higher working efficiency: Find out inefficiency in work site
- 2: Labor saving, automation: Automatic extraction of tact time
- 3: Quick solution: Outlier understanding, image analysis
- 4: Predictive maintenance: To understand changing point and tendency of work

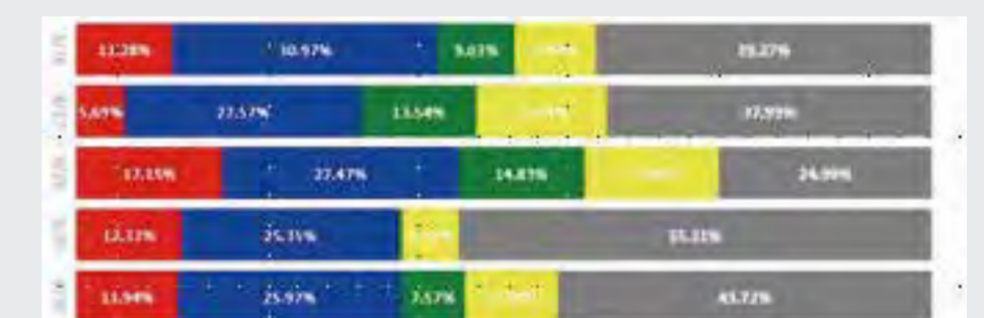
Recorded image

- 1: Quick and precise factor analysis



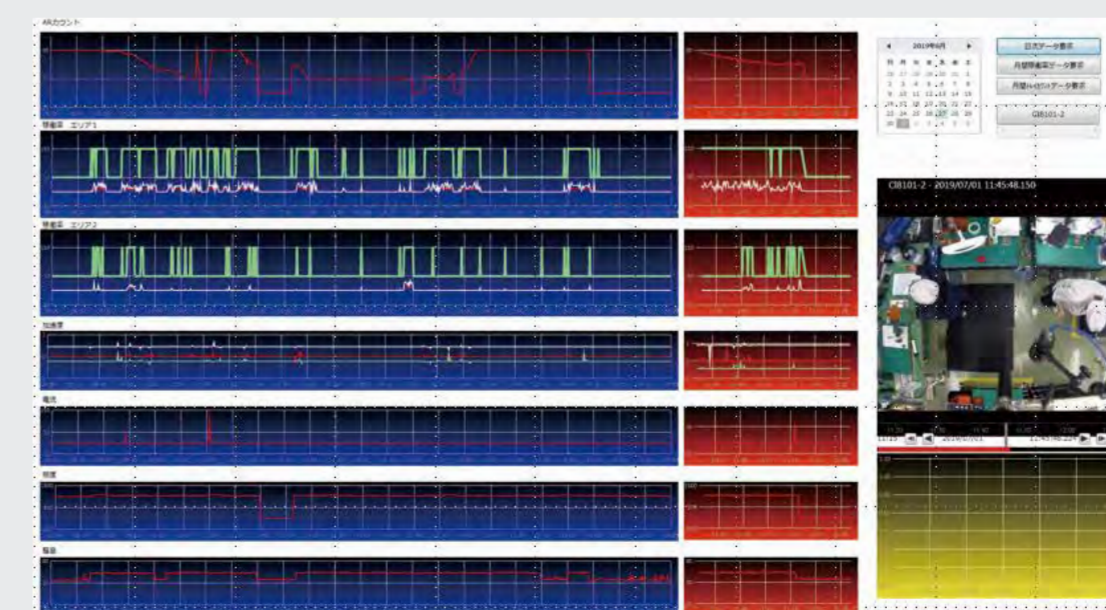
Image utilization

- Location of worker is recorded as time series data.



Parts count

- Number of parts and products on the tray is counted.
- This is useful for visualization of production status and tact time measuring.



IoT client

- One client software can display data and image at the same time.
- It realizes high efficient work analysis.

