

Sony Pregius 4th Generation Camera Lineup

Back-illuminated GS-CMOS camera

BU2409M Series

24.5 MP 15 fps

BU1208M Series

12.3 MP 30.8 fps

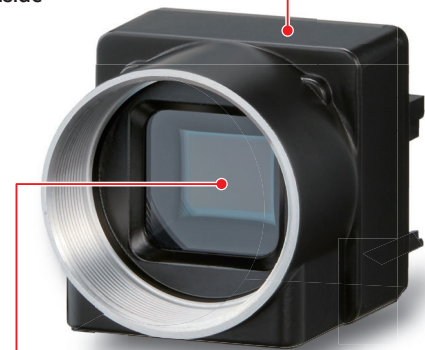
BU805M Series

8.1 MP 46.7 fps

BU502M Series

5 MP 75.6 fps

"Teli Core Technology" inside



Sony's CMOS image sensor

Bandwidth 5G



e-CON connector

USB3 Micro B connector

USB VISION

Pregius S

29(W)×29(H)×16(D)mm

33g

Features

- 1: Adopts back-illuminated technology to achieve high sensitivity even with fine pixels
- 2: USB 5Gbps (USB3.1 Gen1) interface
- 3: High speed response with "Teli Core Technology" (no CPU) system

Target market

- ∴ For system applications that require fine inspection, high resolution, miniaturization, etc.

Main Specifications

Model	BU2409M Series	BU1208M Series	BU805M Series	BU502M Series
Imager	Sony IMX540	Sony IMX545	Sony IMX546	Sony IMX547
Resolution	24.5 MP (5,328 x 4,608 pix)	12.3 MP (4,096 x 3,008 pix)	8.1 MP (2,848 x 2,848 pix)	5 MP (2,448 x 2,048 pix)
Pixel size	2.74 x 2.74 μm			
Image size	1.2 type	1 / 1.1 type	2/3 type	1 / 1.8 type
Frame rate	15 fps	30.8 fps	46.7 fps	75.6 fps
Interface	USB 5Gbps (USB3.1 Gen1)			

* Pregius, Pregius S or Pregius S logo are trademarks of Sony Corporation.

* USB3 Vision is trademark or registered trademark of AIA (Automated Imaging Association).