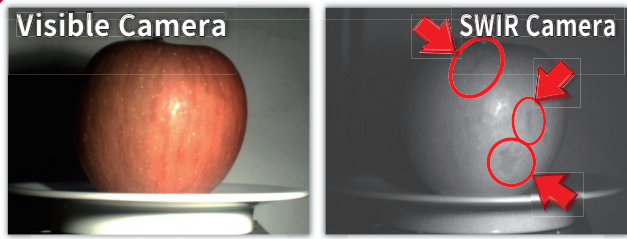


CMOS based SWIR Camera Image Sample

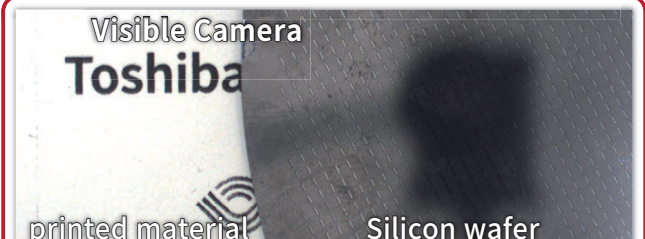
Coffee beans (foreign object = plastic beans)



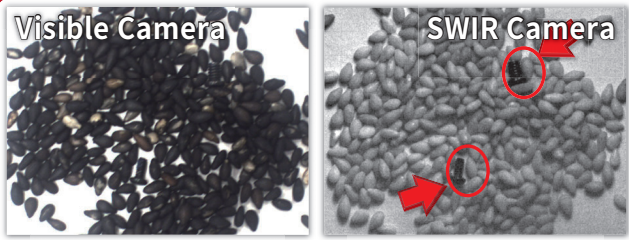
Apple (damage due to dents)



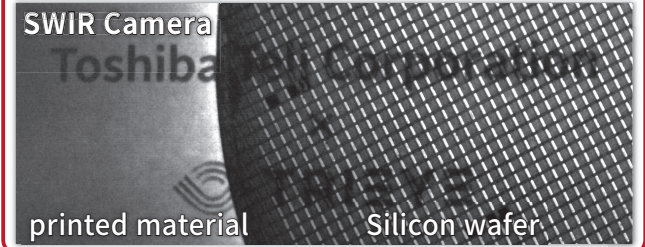
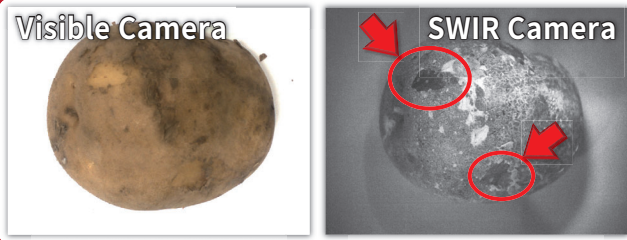
Silicon wafer (transillumination)



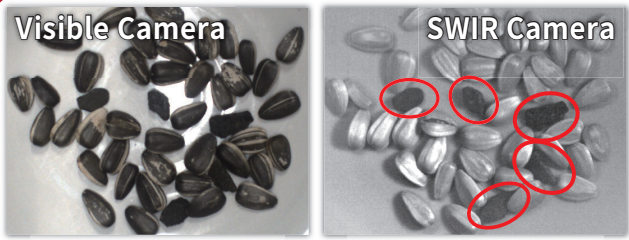
Black sesame beans (foreign object = small screw)



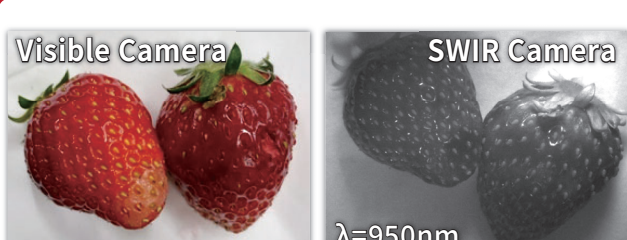
Potato (peel due to rubbing)



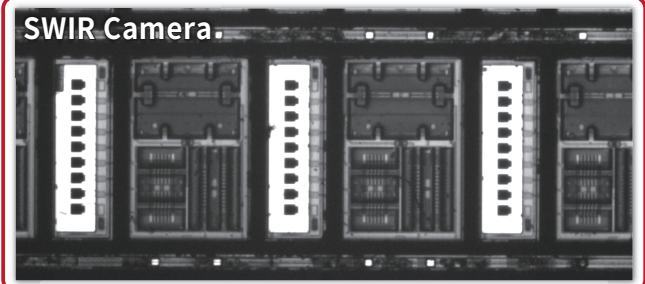
Sunflower seeds (foreign object = pebbles)



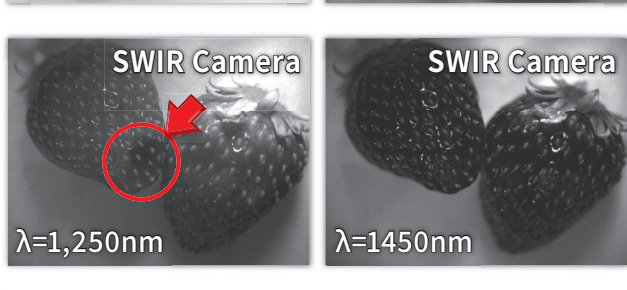
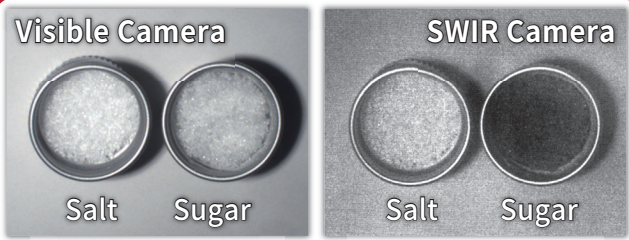
Strawberry (the crushed part looks black)



Silicon wafer (transillumination: recording pattern)



Sugar and salt (sugar looks black)



Soldering iron (heating part looks bright)

